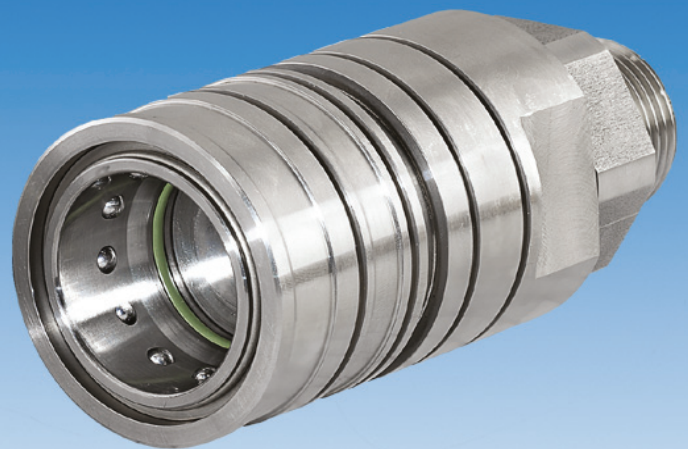
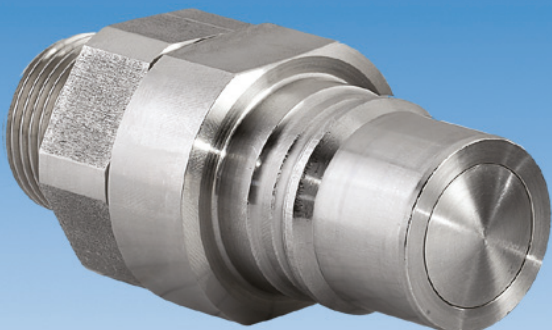


**Niederdruck
Clean-Break-Kupplung**

**Low Pressure
Clean-Break Coupling**

**Serie CT
Series CT**



Beschreibung:

Die Clean-Break-Kupplung der Serie CT ist eine Schnelkkupplung neuester Generation für den Bereich Niederdruck (bis 64 bar).

Geeignet für alle Anwendungen, in denen geringste Leckagen bei einfachster Bedienung und hohem Durchfluss gefordert werden.

Merkmale:

- Einfaches Kuppeln durch Verriegelungsautomatik.
- Spritzfreies Kuppeln und Entkuppeln, d.h. minimale Leckagemengen und minimaler Lufteintrag beim Kuppeln.
- Geringe Kuppelkraft auch bei nicht schmierenden Medien.
- Kuppeln unter Restdrücken (siehe technische Daten).
- Hoher Durchflusskennwert (Cv) aufgrund strömungsgünstiger Ventilgeometrien.
- Ausführung in Edelstahl.
- Ringgriffe zur Bedienungs erleichterung optional für DN 19 erhältlich.
- In ATEX-Ausführung, sowie nach TA-Luft (VDI 2440) oder mit 3.1-Zeugnis (dokumentierte Fertigung) lieferbar.
- Temperaturbereich gekuppelt: -20 °C bis 130 °C / je nach Dichtungsqualität, anderer Temperaturbereich auf Anfrage.

Empfehlung:

Zum Schutz von Dichtflächen sollten die Verschlussnippel fest montiert und die Verschlusskupplungen als Loseile verwendet werden.

Description:

The clean-break couplings of the CT series are our latest generation quick couplings for low pressure applications (up to 64 bar / 928 psi).

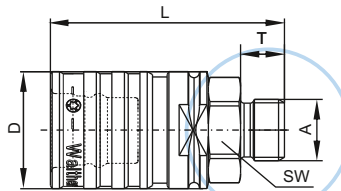
This series is suitable for all applications which demand minimal leakage, easiest handling and a high flow rate.

Features:

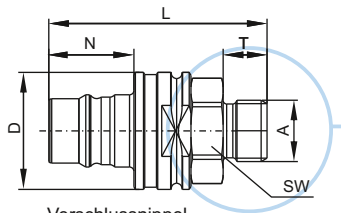
- Easy connection with automatic lock.
- Non-squirting connection and disconnection, i.e. virtually no leakage and minimal air inclusion during connection.
- Low couple force even with non-lubricating fluids.
- Connection under residual pressures (see technical data).
- High flow rate (Cv) due to flow optimised valve geometries.
- Made of stainless steel.
- Size 19 mm available with ring grip option for an easier handling.
- Available in an ATEX conforming version and according to TA-Luft VDI 2440 (Technical Instructions on Air Quality Control) or with a certificate to EN 10204-3.1.
- Temperature range coupled: -20 °C to 130 °C / depending on the seal quality, other temperature range on request.

We recommend:

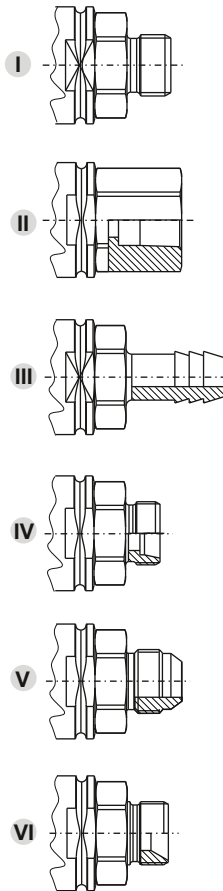
The self sealing adaptors should be rigidly mounted and the self sealing couplings should be used as free parts which protects the sealing faces.



Verschlusskupplung
Self-sealing coupling



Verschlussnippel
Self-sealing adaptor



Form I

- Zylindrisches Whitworth-Rohrgewinde, Aussengewinde nach DIN ISO 228
British standard pipe parallel (BSPP), male thread to DIN ISO 228

Form II

- Zylindrisches Whitworth-Rohrgewinde, Innengewinde nach DIN ISO 228
British standard pipe parallel (BSPP), female thread to DIN ISO 228

- Kegeliges NPT-Gewinde nach US-Standard
Conical NPT thread to US standard

Form III

- Schlauchanschluss
Hose connection

Form IV

- Metrisches Aussengewinde mit 24° Dichtkonus nach DIN 2353, für Schneidring und Überwurfmutter nach DIN EN ISO 8434-1, leichte Bauweise / schwere Bauweise auch verlängert als Schottanschluss
Metric male thread with 24° sealing cone to DIN 2353, for ferrule and swivel nut to DIN EN ISO 8434-1, light-duty/ heavy-duty series also extended for bulkhead mounting

Form V

- Zylindrische UNF- Aussengewinde mit 37° Dichtkegel
Cylindric UNF male thread with 37° sealing cone

Form VI

- Metrisches Aussengewinde nach DIN 7631 mit 60° Dichtkonus, für Dichtkegel nach DIN 3861 und Überwurfmutter nach DIN 3870, auch verlängert als Schottanschluss
Metric male thread to DIN 7631 with 60° female sealing cone, for male sealing cone to DIN 3861 and swivel nut to DIN 3870, also extended for bulkhead mounting

- Zylindrisches Whitworth-Rohrgewinde, Aussengewinde nach DIN ISO 228 / BS 5200, mit 60° Dichtkonus
British standard pipe parallel (BSPP), male thread to DIN ISO 228 / BS 5200, with 60° sealing cone

Bei der Festlegung des Betriebsdruckes ist neben dem Betriebsdruck der Kupplungsarmatur auch der max. zulässige Betriebsdruck des genormten Anschlusses (siehe Anschlussdetails rechts!) zu berücksichtigen!
When determining the operating pressure, the specific working pressure of the coupling, and the maximum working pressure of the end connection (see details on the right!) have to be considered!

| Technische Daten Technical data: | | Betriebsdruck Working pressure P max. stat. | | | | kuppelbar unter Restdruck / can be connected under residual pressure | | Leckage- menge Amount of leakage [ml]* | Cv-Wert Cv- value | Standard- Dichtungen: FKM, andere Dichtungsqualitäten auf Anfrage (EPDM, FFKM ...) Standard seals: FKM, other seal qualities on request (EPDM, FFKM ...) Werkstoffe: Gehäuse: Edelstahl 1.4305 Federn: Edelstahl 1.4310 Materials: housing: stainless steel 1.4305 / AISI 304 springs: stainless steel 1.4310 / AISI 301 * bei 3,5 bar, Medium Wasser at 50 psi, media water |
|-------------------------------------|----|--|-------|----------------------------|-------|---|-------|--|----------------------|---|
| | | gekuppelt connected | | entkuppelt disconnected | | | | | | |
| Type | DN | [bar] | [psi] | [bar] | [psi] | [bar] | [psi] | | | |
| CT-003 | 3 | 64 | 930 | 30 | 450 | 30 | 450 | 0,03 | 0,45 | |
| CT-005 | 5 | 64 | 930 | 30 | 450 | 25 | 350 | 0,1 | 0,8 | |
| CT-007 | 7 | 64 | 930 | 30 | 450 | 10 | 150 | 0,1 | 1,85 | |
| CT-009 | 9 | 64 | 930 | 30 | 450 | 10 | 150 | 0,1 | 2,75 | |
| CT-012 | 12 | 64 | 930 | 30 | 450 | 8 | 120 | 0,15 | 4,5 | |
| CT-019 | 19 | 40 | 600 | 30 | 450 | 2 | 30 | 0,3 | 9,8 | |

| | Artikel-Nummer Part number <small>kurzfristig lieferbar available at short notice</small> | Anschluss A Connection A | Form | Reihe Series | Rohr AD Pipe OD | DN | D | SW | L | T | N | Gewicht Weight (g) |
|---|---|-----------------------------|------|-----------------|--------------------|----|------|----|------|----|------|-----------------------|
| Verschlusskupplung Self-sealing coupling | CT-003-_____ | G 1/8A | I | | | | 21,4 | 14 | 61,7 | 8 | | 98 |
| | CT-003-_____ | G 1/4A | I | | | | 21,4 | 14 | 64,7 | 11 | | 104 |
| | CT-003-_____ | G 1/8 | II | | | | 21,4 | 14 | 63,7 | 9 | | 104 |
| | CT-003-_____ | 4 mm | III | | | | 21,4 | 14 | 72,9 | 18 | | 97 |
| | CT-003-_____ | 6 mm | III | | | | 21,4 | 14 | 78,7 | 25 | | 98 |
| Verschlussnippel Self-sealing adaptor | CT-003-_____ | G 1/8A | I | | | | 21,4 | 14 | 47,5 | 8 | 22,2 | 43 |
| | CT-003-_____ | G 1/4A | I | | | | 21,4 | 14 | 50,5 | 11 | 22,2 | 49 |
| | CT-003-_____ | G 1/8 | II | | | | 21,4 | 14 | 49,5 | 9 | 22,2 | 49 |
| | CT-003-_____ | 4 mm | III | | | | 21,4 | 14 | 58,7 | 18 | 22,2 | 42 |
| | CT-003-_____ | 6 mm | III | | | | 21,4 | 14 | 64,5 | 25 | 22,2 | 43 |
| Verschlusskupplung / Self-sealing coupling | CT-005-_____ | G 1/4A | I | | | | 26,2 | 19 | 68,5 | 11 | | 160 |
| | CT-005-_____ | G 3/8A | I | | | | 26,2 | 19 | 69,5 | 12 | | 170 |
| | CT-005-_____ | G 1/2A | I | | | | 26,2 | 22 | 72,5 | 15 | | 190 |
| | CT-005-_____ | G 1/4A | VI | | | 6 | 26,2 | 19 | 68,5 | 11 | | 160 |
| | CT-005-_____ | G 3/8A | VI | | | 6 | 26,2 | 19 | 69,5 | 12 | | 170 |
| | CT-005-_____ | M 14x1,5 | V | | | 6 | 26,2 | 19 | 67,5 | 10 | | 160 |
| | CT-005-_____ | M 14x1,5 | VI | | | 6 | 26,2 | 19 | 89,5 | 32 | | 180 |
| | CT-005-_____ | M 12x1,5 | IV | L | 6 | 4 | 26,2 | 19 | 67,5 | 10 | | 160 |
| | CT-005-_____ | M 14x1,5 | IV | L | 8 | 6 | 26,2 | 19 | 67,5 | 10 | | 160 |
| | CT-005-_____ | M 16x1,5 | IV | L | 10 | 8 | 26,2 | 19 | 68,5 | 11 | | 160 |
| | CT-005-_____ | M 18x1,5 | IV | L | 12 | 10 | 26,2 | 19 | 68,5 | 11 | | 160 |
| | CT-005-_____ | M 18x1,5 | IV | S | 10 | 6 | 26,2 | 19 | 68,5 | 12 | | 170 |
| | CT-005-_____ | M 20x1,5 | IV | S | 12 | 8 | 26,2 | 22 | 69,5 | 12 | | 180 |
| | CT-005-_____ | M 14x1,5 | IV | L | 8 | 6 | 26,2 | 19 | 89,5 | 32 | | 180 |
| | CT-005-_____ | M 16x1,5 | IV | L | 10 | 8 | 26,2 | 19 | 89,5 | 32 | | 190 |

| | Artikel-Nummer Part number kurzfristig lieferbar available at short notice | Anschluss A Connection A | Form | Reihe Series | Rohr AD Pipe OD | DN | D | SW | L | T | N | Gewicht Weight (g) |
|--|---|--|---|-----------------|--------------------|----|------|----|------|------|----|-----------------------|
| Verschlusskupplung / Self-sealing coupling | CT-005-_____ | G 1/4 | II | | | | 26,2 | 19 | 67,5 | 13 | | 170 |
| | CT-005-_____ | G 3/8 | II | | | | 26,2 | 22 | 68,5 | 14 | | 170 |
| | CT-005-_____ | 6mm | III | | | | 26,2 | 19 | 82,5 | 25 | | 160 |
| | CT-005-_____ | 9mm | III | | | | 26,2 | 19 | 87,5 | 30 | | 160 |
| | CT-005-_____ | 11mm | III | | | | 26,2 | 19 | 87,5 | 30 | | 170 |
| | CT-005-_____ | 13mm | III | | | | 26,2 | 19 | 87,5 | 30 | | 180 |
| | CT-005-_____ | NPT1/4"IG | II | | | | 26,2 | 19 | 72,5 | 17 | | 180 |
| | CT-005-_____ | NPT3/8"IG | II | | | | 26,2 | 19 | 72,5 | 18 | 22 | 180 |
| | CT-005-_____ | 9/16-18UNF-3A-JIC | V | | | | 26,2 | 19 | 71,5 | 14,1 | 22 | 170 |
| Verschlussnippel / Self-sealing adaptor | CT-005-_____ | G 1/4A | I | | | | 26 | 19 | 54 | 11 | 22 | 72 |
| | CT-005-_____ | G 3/8A | I | | | | 26 | 19 | 55 | 12 | 22 | 77 |
| | CT-005-_____ | G 1/2A | I | | | | 26 | 22 | 58 | 15 | 22 | 97 |
| | CT-005-_____ | G 1/4A | VI | | | 6 | 26 | 19 | 54 | 11 | 22 | 72 |
| | CT-005-_____ | G 3/8A | VI | | | 6 | 26 | 19 | 55 | 12 | 22 | 77 |
| | CT-005-_____ | M14x1,5 | VI | | | 6 | 26 | 19 | 53 | 10 | 22 | 72 |
| | CT-005-_____ | M14x1,5 | VI | | | 6 | 26 | 19 | 75 | 32 | 22 | 87 |
| | CT-005-_____ | M12x1,5 | IV | L | 6 | 4 | 26 | 19 | 53 | 10 | 22 | 67 |
| | CT-005-_____ | M14x1,5 | IV | L | 8 | 6 | 26 | 19 | 53 | 10 | 22 | 72 |
| | CT-005-_____ | M16x1,5 | IV | L | 10 | 8 | 26 | 19 | 54 | 11 | 22 | 72 |
| | CT-005-_____ | M18x1,5 | IV | L | 12 | 10 | 26 | 19 | 54 | 11 | 22 | 72 |
| | CT-005-_____ | M18x1,5 | IV | S | 10 | 6 | 26 | 19 | 55 | 12 | 22 | 77 |
| | CT-005-_____ | M20x1,5 | IV | S | 12 | 8 | 26 | 22 | 55 | 12 | 22 | 87 |
| | CT-005-_____ | M14x1,5 | IV | L | 8 | 6 | 26 | 19 | 75 | 32 | 22 | 87 |
| | CT-005-_____ | M16x1,5 | IV | L | 10 | 8 | 26 | 19 | 75 | 32 | 22 | 97 |
| | CT-005-_____ | G1/4 | II | | | | 26 | 19 | 53 | 13 | 22 | 85 |
| | CT-005-_____ | G 3/8 | II | | | | 26 | 22 | 54 | 14 | 22 | 82 |
| | CT-005-_____ | 6mm | III | | | | 26 | 19 | 68 | 25 | 22 | 67 |
| | CT-005-_____ | 9mm | III | | | | 26 | 19 | 73 | 30 | 22 | 72 |
| | CT-005-_____ | 11mm | III | | | | 26 | 19 | 73 | 30 | 22 | 77 |
| | CT-005-_____ | 13mm | III | | | | 26 | 19 | 58 | 30 | 22 | 87 |
| CT-005-_____ | NPT 1/4" IG | II | | | | 26 | 19 | 58 | 17 | 22 | 85 | |
| CT-005-_____ | NPT 3/8" IG | II | | | | 26 | 19 | 58 | 18 | | 80 | |
| CT-005-_____ | 9/16-18UNF-3A-JIC | V | | | | 26 | 19 | 57 | 14,1 | | 70 | |
| | SK-028-_____ | Staubkappe Kupplung Dust cap coupling | passend für alle Kupplungen der Type CT-005; siehe Extra- Prospekt / suitable for all couplings CT-005; see extra leaflet | | | | | | | | | |
| | SL-014-_____ | Staubkappe Nippel Dust cap adaptor | passend für alle Nippel der Type CT-005; siehe Extra- Prospekt / suitable for all adaptors CT-005; see extra leaflet | | | | | | | | | |
| | CT-007-_____ | G 3/8A | I | | | | 32,7 | 24 | 78 | 12 | | 260 |
| | CT-007-_____ | G1/2A | I | | | | 32,7 | 24 | 81 | 15 | | 270 |
| | CT-007-_____ | G 3/8A | VI | | | 7 | 32,7 | 24 | 78 | 12 | | 250 |

| | Artikel-Nummer Part number <small>kurzfristig lieferbar available at short notice</small> | Anschluss A Connection A | Form | Reihe Series | Rohr AD Pipe OD | DN | D | SW | L | T | N | Gewicht Weight (g) |
|--|---|---|-------|-----------------|--------------------|----|------|----|------|------|----|-----------------------|
| Verschlusskupplung / Self-sealing coupling | CT-007-_____ | M16x1,5 | VI | | | 8 | 32,7 | 24 | 77 | 11 | | 260 |
| | CT-007-_____ | M16x1,5 | VI | | | 8 | 32,7 | 24 | 99,5 | 33,5 | | 270 |
| | CT-007-_____ | M16x1,5 | IV | L | 10 | 8 | 32,7 | 24 | 77 | 11 | | 250 |
| | CT-007-_____ | M 18 x 1,5 | IV | L | 12 | 10 | 32,7 | 24 | 77 | 11 | | 250 |
| | CT-007-_____ | M 20 x 1,5 | IV | S | 12 | 8 | 32,7 | 24 | 78 | 12 | | 260 |
| | CT-007-_____ | G 3/8 | II | | | | 32,7 | 24 | 78 | 14 | | 270 |
| | CT-007-_____ | G 1/2 | II | | | | 32,7 | 27 | 81 | 17 | | 290 |
| | CT-007-_____ | 9 mm | III | | | | 32,7 | 24 | 96 | 30 | | 260 |
| | CT-007-_____ | 11 mm | III | | | | 32,7 | 24 | 96 | 30 | | 260 |
| | CT-007-_____ | 13 mm | III | | | | 32,7 | 24 | 96 | 30 | | 270 |
| | CT-007-_____ | NPT 3/8" IG | II | | | | 32,7 | 24 | 82 | 18 | | 280 |
| | CT-007-_____ | 9/16-18UNF-3A-JIC | V | | | | 32,7 | 24 | 80,1 | 14,1 | | 250 |
| | Verschlussnippel / Self-sealing adaptor | CT-007-_____ | G1/4A | I | | | | 26 | 19 | 53 | 11 | 27 |
| CT-007-_____ | | G 3/8A | I | | | | 26 | 19 | 54 | 12 | 27 | 78 |
| CT-007-_____ | | G 1/2A | I | | | | 26 | 22 | 57 | 15 | 27 | 88 |
| CT-007-_____ | | G 1/4 A | VI | | | 6 | 26 | 19 | 53 | 11 | 27 | 73 |
| CT-007-_____ | | G 3/8 A | VI | | | 6 | 26 | 19 | 54 | 12 | 27 | 78 |
| CT-007-_____ | | M 14 x 1,5 | VI | | | 6 | 26 | 19 | 52 | 10 | 27 | 73 |
| CT-007-_____ | | M 14 x 1,5 | VI | | | 6 | 26 | 19 | 74 | 32 | 27 | 93 |
| CT-007-_____ | | M 12 x 1,5 | IV | L | 6 | 4 | 26 | 19 | 52 | 10 | 27 | 73 |
| CT-007-_____ | | M 14 x 1,5 | IV | L | 8 | 6 | 26 | 19 | 52 | 10 | 27 | 73 |
| CT-007-_____ | | M 16 x 1,5 | IV | L | 10 | 8 | 26 | 19 | 53 | 11 | 27 | 73 |
| CT-007-_____ | | M 18 x 1,5 | IV | L | 12 | 10 | 26 | 19 | 53 | 11 | 27 | 73 |
| CT-007-_____ | | M 18 x 1,5 | IV | S | 10 | 6 | 26 | 19 | 54 | 12 | 27 | 83 |
| CT-007-_____ | | M 20 x 1,5 | IV | S | 12 | 8 | 26 | 22 | 54 | 12 | 27 | 93 |
| CT-007-_____ | | M 14 x 1,5 | IV | L | 8 | 6 | 26 | 19 | 74 | 32 | 27 | 93 |
| CT-007-_____ | | M 16 x 1,5 | IV | L | 10 | 8 | 26 | 19 | 74 | 32 | 27 | 103 |
| CT-007-_____ | | G 1/4 | II | | | | 26 | 19 | 52 | 13 | 27 | 83 |
| CT-007-_____ | | G 3/8 | II | | | | 26 | 22 | 53 | 14 | 27 | 83 |
| CT-007-_____ | | 9 mm | III | | | | 26 | 19 | 72 | 30 | 27 | 73 |
| CT-007-_____ | | 11 mm | III | | | | 26 | 19 | 72 | 30 | 27 | 73 |
| CT-007-_____ | | 13 mm | III | | | | 26 | 19 | 72 | 30 | 27 | 83 |
| CT-007-_____ | NPT 3/8" IG | II | | | | 26 | 19 | 57 | 18 | 27 | 82 | |
| CT-007-_____ | 9/16-18UNF-3A-JIC | V | | | | 26 | 19 | 56 | 14,1 | 27 | 71 | |
| SK-033-_____ | Staubkappe Kupplung Dust cap coupling | passend für alle Kupplungen der Type CT-007; siehe Extra- Prospekt / suitable for all couplings CT-007; see extra leaflet | | | | | | | | | | |
| SL-018-_____ | Staubkappe Nippel Dust cap adaptor | passend für alle Nippel der Type CT-007; siehe Extra- Prospekt / suitable for all adaptors CT-007; see extra leaflet | | | | | | | | | | |
| CT-009-_____ | G 3/8A | I | | | | | 35,4 | 25 | 83 | 12 | | 333 |
| CT-009-_____ | G1/2A | I | | | | | 35,4 | 25 | 86 | 15 | | 343 |

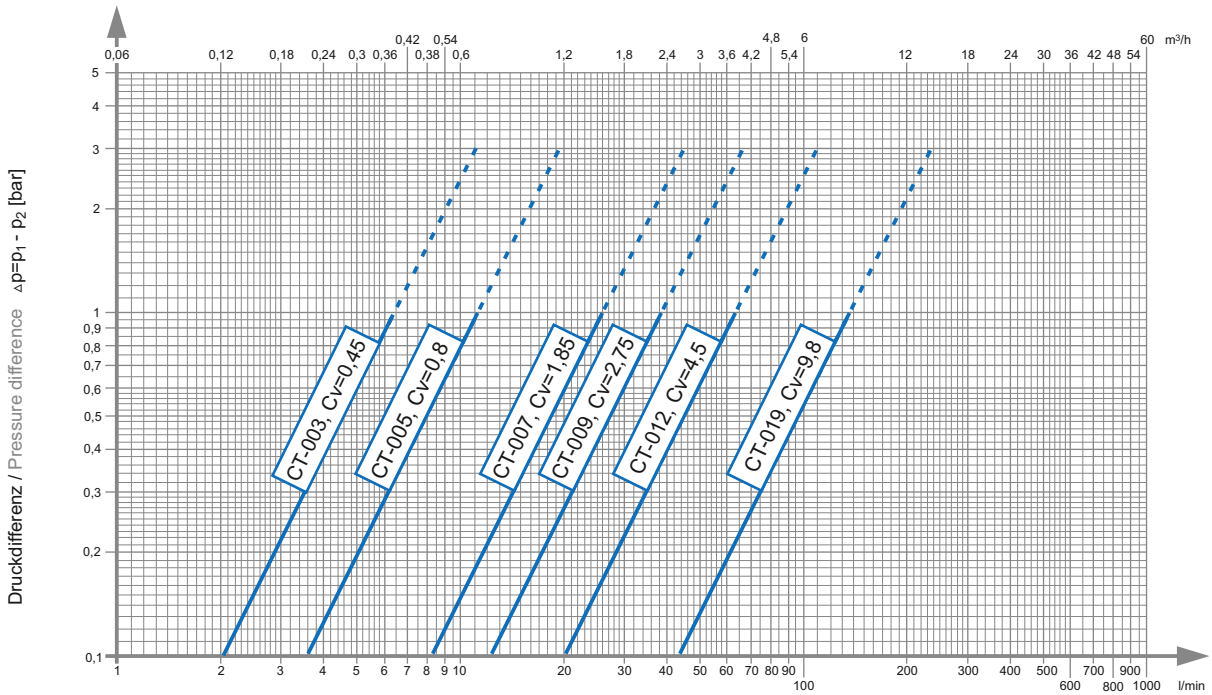
| | Artikel-Nummer Part number <small>kurzfristig lieferbar available at short notice</small> | Anschluss A Connection A | Form | Reihe Series | Rohr AD Pipe OD | DN | D | SW | L | T | N | Gewicht Weight (g) |
|--|---|--|------|---|--------------------|----|------|----|------|------|----|-----------------------|
| | CT-009-_____ | G 1/2 | II | | | | 35,4 | 27 | 86 | 17 | | 283 |
| | CT-009-_____ | 13 mm | III | | | | 35,4 | 25 | 101 | 30 | | 273 |
| Verschlussnippel / Self-sealing adaptor | CT-009-_____ | G 3/8 A | I | | | | 28 | 25 | 68 | 12 | 30 | 130 |
| | CT-009-_____ | G 1/2 A | I | | | | 28 | 25 | 71 | 15 | 30 | 140 |
| | CT-009-_____ | G 1/2 | II | | | | 30 | 27 | 71 | 17 | 30 | 180 |
| | CT-009-_____ | 13 mm | III | | | | 28 | 25 | 86 | 30 | 30 | 170 |
| | CT-009-_____ | NPT 1/2" IG | II | | | | 30 | 27 | 73 | 22 | 30 | 190 |
| | CT-009-_____ | 9/16-18UNF-3A-JIC | V | | | | 28 | 25 | 70,1 | 14,1 | 30 | 120 |
| | SK-036-_____ | Staubkappe Kupplung Dust cap coupling | | passend für alle Kupplungen der Type CT-009; siehe Extra- Prospekt / suitable for all couplings CT-009; see extra leaflet | | | | | | | | |
| | SL-020-_____ | Staubkappe Nippel Dust cap adaptor | | passend für alle Nippel der Type CT-009; siehe Extra- Prospekt / suitable for all adaptors CT-009; see extra leaflet | | | | | | | | |
| Verschlusskupplung / Self-sealing coupling | CT-012-_____ | G 1/2 A | I | | | | 40 | 32 | 80 | 15 | | 380 |
| | CT-012-_____ | G 3/4 A | I | | | | 40 | 32 | 82 | 17 | | 410 |
| | CT-012-_____ | G 1 A | I | | | | 40 | 32 | 86 | 20 | | 470 |
| | CT-012-_____ | G 1/2 A | VI | | | 12 | 40 | 32 | 80 | 15 | | 380 |
| | CT-012-_____ | G 3/4 A | VI | | | 12 | 40 | 32 | 82 | 17 | | 400 |
| | CT-012-_____ | M 22 x 1,5 | VI | | | 12 | 40 | 32 | 77 | 17 | | 380 |
| | CT-012-_____ | M 22 x 1,5 | VI | | | 12 | 40 | 32 | 104 | 39 | | 430 |
| | CT-012-_____ | M 18 x 1,5 | IV | L | 12 | 10 | 40 | 32 | 76 | 11 | | 370 |
| | CT-012-_____ | M 22 x 1,5 | IV | L | 15 | 12 | 40 | 32 | 77 | 12 | | 380 |
| | CT-012-_____ | M 24 x 1,5 | IV | S | 16 | 12 | 40 | 32 | 79 | 14 | | 390 |
| | CT-012-_____ | G 1/2 | II | | | | 40 | 32 | 79 | 17 | | 420 |
| | CT-012-_____ | G 3/4 | II | | | | 40 | 32 | 81 | 19 | | 400 |
| | CT-012-_____ | 16 mm | III | | | | 40 | 32 | 100 | 35 | | 390 |
| | CT-012-_____ | 19 mm | III | | | | 40 | 32 | 100 | 35 | | 410 |
| | CT-012-_____ | NPT 1/2" IG | II | | | | 40 | 32 | 84 | 22 | | 480 |
| | CT-012-_____ | 7/8-14UNF-3A-JIC | V | | | | 40 | 32 | 84 | 19,3 | | 400 |
| Verschlussnippel / Self-sealing adaptor | CT-012-_____ | G 1/2 A | I | | | | 40 | 32 | 76 | 15 | 30 | 260 |
| | CT-012-_____ | G 3/4 A | I | | | | 40 | 32 | 78 | 17 | 30 | 290 |
| | CT-012-_____ | G 1 A | I | | | | 40 | 32 | 82 | 20 | 30 | 350 |
| | CT-012-_____ | G 1/2 A | VI | | | 12 | 40 | 32 | 76 | 15 | 30 | 260 |
| | CT-012-_____ | G 3/4 A | VI | | | 12 | 40 | 32 | 87 | 17 | 30 | 280 |
| | CT-012-_____ | M 22 x 1,5 | VI | | | 12 | 40 | 32 | 73 | 17 | 30 | 260 |
| | CT-012-_____ | M 22 x 1,5 | VI | | | 12 | 40 | 32 | 100 | 39 | 30 | 260 |
| | CT-012-_____ | M 18 x 1,5 | IV | L | 12 | 10 | 40 | 32 | 72 | 11 | 30 | 250 |
| | CT-012-_____ | M 22 x 1,5 | IV | L | 15 | 12 | 40 | 32 | 73 | 12 | 30 | 260 |
| | CT-012-_____ | M 24 x 1,5 | IV | S | 16 | 12 | 40 | 32 | 75 | 14 | 30 | 270 |
| | CT-012-_____ | G 1/2 | II | | | | 40 | 32 | 78 | 17 | 30 | 300 |
| | CT-012-_____ | G 3/4 | II | | | | 40 | 32 | 80 | 19 | 30 | 280 |

| | Artikel-Nummer Part number <i>kurzfristig lieferbar</i> <i>available at short notice</i> | Anschluss A Connection A | Form | Reihe Series | Rohr AD Pipe OD | DN | D | SW | L | T | N | Gewicht Weight (g) |
|--|---|--|---|-----------------|--------------------|----|----|----|-----|------|----|-----------------------|
| | CT-012-_____ | 16 mm | III | | | | | 32 | 96 | 35 | 30 | 270 |
| | CT-012-_____ | 19 mm | III | | | | | 32 | 96 | 35 | 30 | 290 |
| | CT-012-_____ | NPT 1/2" IG | II | | | | | 32 | 83 | 22 | 30 | 360 |
| | CT-012-_____ | 7/8-14UNF-3A-JIC | V | | | | | 32 | 83 | 19,3 | 30 | 280 |
| | SK-040-_____ | Staubkappe Kupplung Dust cap coupling | passend für alle Kupplungen der Type CT-012; siehe Extra- Prospekt / suitable for all couplings CT-012; see extra leaflet | | | | | | | | | |
| | SL-022-_____ | Staubkappe Nippel Dust cap adaptor | passend für alle Nippel der Type CT-012; siehe Extra- Prospekt / suitable for all adaptors CT-012; see extra leaflet | | | | | | | | | |
| Verschlusskupplung / Self-sealing coupling | CT-019-_____ | G 3/4 A | I | | | | 58 | 46 | 128 | 17 | | 1390 |
| | CT-019-_____ | G 1 A | I | | | | 58 | 46 | 131 | 20 | | 1420 |
| | CT-019-_____ | G 3/4 A | VI | | | 19 | 58 | 46 | 128 | 17 | | 1380 |
| | CT-019-_____ | G 1 A | VI | | | 19 | 58 | 46 | 131 | 20 | | 1420 |
| | CT-019-_____ | M 30 x 1,5 | VI | | | 19 | 58 | 46 | 156 | 45 | | 1470 |
| | CT-019-_____ | M 30 x 2 | IV | L | 22 | 20 | 58 | 46 | 125 | 14 | | 1380 |
| | CT-019-_____ | M 36 x 2 | IV | S | 25 | 20 | 58 | 46 | 129 | 18 | | 1410 |
| | CT-019-_____ | G 3/4 | II | | | | 58 | 46 | 122 | 19 | | 1440 |
| | CT-019-_____ | G 1 | II | | | | 58 | 46 | 126 | 23 | | 1430 |
| | CT-019-_____ | 19 mm | III | | | | 58 | 46 | 146 | 35 | | 1400 |
| | CT-019-_____ | 25 mm | III | | | | 58 | 46 | 151 | 40 | | 1420 |
| | CT-019-_____ | 28 mm | III | | | | 58 | 46 | 156 | 45 | | 1470 |
| | CT-019-_____ | NPT 3/4" IG | II | | | | 58 | 46 | 127 | 23,5 | | 1460 |
| | CT-019-_____ | 1 1/16-12UN-3A-JIC | V | | | | 58 | 46 | 133 | 22 | | 1360 |
| Verschlussnippel / Self-sealing adaptor | CT-019-_____ | G 3/4 A | I | | | | 52 | 46 | 99 | 17 | 44 | 570 |
| | CT-019-_____ | G 1 A | I | | | | 52 | 46 | 102 | 20 | 44 | 600 |
| | CT-019-_____ | G 3/4 A | VI | | | 19 | 52 | 46 | 99 | 17 | 44 | 570 |
| | CT-019-_____ | G 1 A | VI | | | 19 | 52 | 46 | 102 | 20 | 44 | 600 |
| | CT-019-_____ | M 30 x 1,5 | VI | | | 19 | 52 | 46 | 127 | 45 | 44 | 650 |
| | CT-019-_____ | M 30 x 2 | IV | L | 22 | 20 | 52 | 46 | 96 | 14 | 44 | 550 |
| | CT-019-_____ | M 36 x 2 | IV | S | 25 | 20 | 52 | 46 | 100 | 18 | 44 | 590 |
| | CT-019-_____ | G 3/4 | II | | | | 52 | 46 | 93 | 19 | 44 | 620 |
| | CT-019-_____ | G 1 | II | | | | 52 | 46 | 97 | 23 | 44 | 610 |
| | CT-019-_____ | 19 mm | III | | | | 52 | 46 | 117 | 35 | 44 | 580 |
| | CT-019-_____ | 25 mm | III | | | | 52 | 46 | 122 | 40 | 44 | 590 |
| | CT-019-_____ | 28 mm | III | | | | 52 | 46 | 127 | 45 | 44 | 660 |
| | CT-019-_____ | NPT 3/4" IG | II | | | | 52 | 46 | 98 | 23,5 | 44 | 640 |
| | CT-019-_____ | 1 1/16-12UN-3A-JIC | V | | | | 52 | 46 | 104 | 22 | 44 | 540 |
| | SK-058-_____ | Staubkappe Nippel Dust cap adaptor | passend für alle Kupplungen der Type CT-019; siehe Extra- Prospekt / suitable for all couplings CT-019; see extra leaflet | | | | | | | | | |
| | SL-035-_____ | Staubkappe Kupplung Dust cap coupling | passend für alle Nippel der Type CT-019; siehe Extra- Prospekt / suitable for all adaptors CT-019; see extra leaflet | | | | | | | | | |

Gerne beraten wir Sie mit der Auslegung und Bestimmung der passenden Type.
We are happy to advise and define the exact type necessary.

Leistungsdiagramm / Performance diagram

Durchflusswerte Cv: Messung in Anlehnung an DIN IEC 534 mit Medium Wasser bei 20 °C / Flow rates Cv: test acc. to DIN IEC 534 with water at 20 °C



Pbu • 05/2014

Varianten und Zubehör / Variations and accessories



Staubkappen für Kupplung und Nippel aus PUR

* Bei der CT-Serie ist die Staubkappe kurz für die Verschlusskupplung und die Staubkappe lang für den Verschlussnippel zu verwenden.

Dust caps and dust plugs made of PUR

* With the CT series, the short dust cap is to be used for the self sealing coupling and the long dust cap for the self sealing adaptor.

CT-012
CT-019
als Nottrennkupplung über Zugseil-Auslösung
as emergency release coupling, release via traction rope



CT-019
mit Ringgriffen zur leichteren Handhabung
with ring grips for easier handling



CT-019
mit Kunststoffscheiben zur Wärmeisolation
with plastic discs for heat insulation



Ausführliche Betriebsanleitung erhältlich / Detailed operation manual available

